

The background of the poster is a photograph of a street scene. In the foreground, a painting easel is set up on a sidewalk. The easel holds a canvas with a painting of a red brick building, a white car, and a blue sky. The easel's lid is open, revealing a palette with various colors of paint. In the background, a red brick building with white windows and a sign that reads 'BAG + BARR' is visible. The scene is set on a sunny day with shadows cast on the pavement.

2025-26 WINTER-SPRING CLASSES

Classes • Workshops • Events



ENCOURAGING CREATIVITY

At First National Bank, we believe in investing in the people and programs that make our communities stronger, and we support initiatives that inspire, connect and engage the communities we serve.

That's why we are proud to support Sweetwater Center for the Arts, as well as their new mobile art unit, SweetRide. Through classes, workshops and cultural events, Sweetwater makes the arts accessible to all, enriching lives and enlivening our community.



fnb-online.com | 1-800-555-5455

MEMBER FDIC

Community, Classes , Culture

OUR MISSION

To enrich the community we serve by: Providing art education and cultural programs, fostering local and regional artistic talent, and making art accessible to a diverse audience.

OUR BOARD

Terri Tunick, President
Sarah Aziz, Vice President
Chris Chan, Treasurer
Bonita Lee Penn, Secretary
Gary Bates
Marcie McClintic Coates
Shari Dearth
Melissa Ewen
Josh Fogle
Karen Zyck Galbraith
Stephen X. Hunter
Tiana Jordan
Chad Kanick
Janice Maria Patz
Stacey Neilson
Tracey Staley
Barbara Cooley Thaw
Jennifer Crawford Young

OFFICE HOURS:

Monday-Friday: 9:00am - 5:00pm

Evening and weekend office hours
pending class schedule.

Please call office at 412-741-4405
for weekly schedule.



200 Broad Street
Sewickley, PA 15143-1525



412-741-4405



412-741-1178



info@sweetwaterartcenter.org



sweetwaterartcenter.org

SWEETWATER WILL BE CLOSED THE FOLLOWING DATES:

- January 1 (New Year's Day)
- January 19 (MLK Jr. Day)
- February 16 (President's Day)
- April 3-6 (Spring Break)
- May 22-25 (Memorial Day)

**LOCATED ON BANK
STREET BETWEEN
BROAD & WALNUT ST,
SEWICKLEY, PA**

**SAVE THE
DATES!**

MAY 16

JUNE 20

JULY 18

AUG. 15

SEPT. 19

SATURDAYS

9 AM - 1 PM



Blooms is a fresh flower and art market designed to empower local flower farmers and artists to sell their quality, locally grown flowers, handcrafted artwork, and garden-related items while connecting with the community.

Interested in vending? Apply via our website by March 1st





Dear Friends,

As we reflect on an extraordinary year, Sweetwater proudly celebrates its 50th anniversary — a milestone marked by a year-long exhibition series honoring past, present, and future creative collaborators. We brought both the Mavuno Festival and Sweet Jazz directly into the heart of the community at the Village Green, deepening Sweetwater's connection with the region and expanding access to the arts. And most recently, our That '70s Bling Ding anniversary celebration raised over \$100,000 in support of capital improvements to our historic home, the Old Sewickley Post Office — ensuring it continues to serve as a vibrant center for creativity for generations to come.

As we enter the next phase of Sweetwater's story, we are launching a comprehensive capital campaign to upgrade and reimagine our programmatic spaces. These enhancements will preserve the historic character of the building while modernizing it with the tools, technology, and accessibility features needed to support a thriving 21st-century arts community.

Our Winter/Spring semester reflects this spirit of momentum and innovation. You'll find a rich selection of new classes for all ages — from beginner workshops and family programs to advanced studios for emerging and professional artists. This season also marks the launch of our Regional Artist-in-Residence Program, made possible by the Singer Family Creative Endowed Fund, as well as the Hart Family Emerging Artist Endowed Scholarship. These legacy gifts ensure that Sweetwater will nurture artistic talent and provide transformative opportunities for generations to come.

As always, my deepest thanks to our Board of Directors, Luminary Society members, donors, foundation and government partners, and our many community collaborators for their steadfast dedication to Sweetwater's mission. Together, we will continue to make art accessible, meaningful, and central to the life of Sewickley and beyond.



A handwritten signature in black ink that reads 'Christine Brondyke'.

Christine Brondyke
Executive Director
Sweetwater Center for the Arts



SWEETWATER
2025 Center for the Arts

SCRIBBLE SQUAD

**MONTHLY
DRAWING
CLUB**

**TUESDAYS
8-12 YEARS OLD**

EMERGING ARTIST SCHOLARSHIP



AWARDED TO
HIGH SCHOOL
STUDENTS



THE HART FAMILY

EMERGING ARTIST SCHOLARSHIP

CONTACT SAIGE BAXTER FOR QUESTIONS
SBAXTER@SWEETWATERARTCENTER.ORG



Donor Membership Benefits

All Luminary Society memberships include a 15% discount on classes and workshops, a 15% discount on gallery art and online store purchases, and a 25% discount on studio rentals.

Questions?



CALL

Sweetwater Center for the Arts
412.741.4405



EMAIL

Christine Brondyke
cbrondyke@sweetwaterartcenter.org



**< SCAN TO
GIVE DIRECTLY**

PLATINUM LEVEL

\$2500+

All of the benefits below, plus:

Complementary access for two to one of our four annual donor experiences

GOLD LEVEL

\$1000-\$2499

All of the benefits below, plus:

Opportunity for 50% off facilities rental

SILVER LEVEL

\$500-\$999

All of the benefits below, plus:

Two complimentary tickets to a Sweetwater performance of choice

BRONZE LEVEL

\$250-\$499

15% discount on classes and workshops, 15% discount on gallery art and online purchases

Invitation to one donor engagement per year

Access to one of our four annual donor experiences

Recognition as a Luminary Society member

Sweetwater Class Policy

Sweetwater makes every effort to maintain the schedule of classes indicated in the catalog, however, we reserve the right to change and/or cancel classes.

Class Cancellations, Attendance, and Withdrawal Policy: Sweetwater is committed to providing high-quality learning experiences for all students. The following policies apply to class cancellations, attendance, and withdrawals.

Late Registration: Students may register for any classes, after the start date, space permitting and with approval from the instructor.

Canceled Classes

If a class is canceled due to low enrollment, inclement weather, or other circumstances beyond the center's control, students will be notified at least 48 hours in advance. In such cases, students will receive either a full refund to their original payment method or a class credit toward a future course.

Student Absences

Sweetwater does not offer make-up classes, tuition reimbursement, or prorated tuition for classes a student is unable to attend.

Withdrawals and Dropped Classes

Students who wish to withdraw from a class must do so at least five (5) business days prior to the start date of the class.

- Withdrawals made five or more business days before the start date are eligible for a refund.
- Withdrawals made less than five business days before the start date are eligible for class credit only.
- No refunds or credits will be issued without at least five days' notice.
- Class credits are non-transferable and may only be applied **toward future class tuition.**













Accessibility

Sweetwater welcomes individuals with disabilities to our facility and is committed to providing the best access possible to our events and programming. We encourage questions, requests, and suggestions to help us achieve our ongoing goal of creating a comfortable, enjoyable environment suited to all unique needs and abilities.

Building: Accessible entrances to our building include the Bank Street entrance and Sweetwater's parking lot entrance. The Bank Street entrance may be used to access the lower level of our building. The parking lot entrance may be used to access the upper level of our building. Once inside the building, the upper and lower levels are only connected via stairs. Accessible restrooms are available on each level. Due to the nature of our historic building, Sweetwater's gallery, located on the mezzanine, is not accessible for persons with limited mobility.

Contact: If you have questions, suggestions, or requests, please contact our Accessibility Coordinator, Christine Brondyke by calling 412-741-4405 or emailing chrondyke@sweetwaterartcenter.org.

TABLE OF *Contents*

	DRAWING & PAINTING	11
	MIXED MEDIA	14
	METALSMITHING	18
	CERAMICS	20
	CULINARY	24
	TEENS	28
	CHILDREN	30
	EARLY CHILDHOOD	34
	BIRTHDAY PARTIES	37
	MASTER CLASSES	38
	EVENTS	40
	DONORS	44

***Scan to see the full
CLASS CALENDAR***

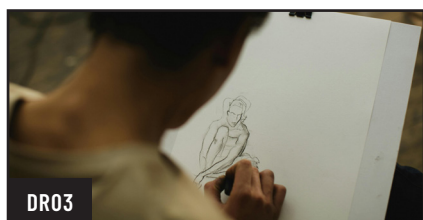


Sweetwater **CLASSES**



Scan for the full list of
**WINTER & SPRING
CLASSES**

DRAWING & Painting



DR03

Figure Drawing for All Skill Levels

with Genevieve Barbee-Turner

📅 2/20-3/27

🕒 Thursdays from 6pm-9pm

\$ \$270

👤 18+



PA03

Creating Hope Through Art

with Jamie Monaghan

📅 1/11-1/25

🕒 Sundays from 5pm-8pm

\$ \$90

👤 18+



DR06

Tarot Card Design Workshop

with Genevieve Barbee-Turner

📅 2/28

🕒 Saturday from 12pm-3pm

\$ \$70

👤 18+



DR01

Foundations of Drawing: Still Life & Shading Techniques

with Jamie Monaghan

📅 2/28-4/11

🕒 Saturdays from 5pm-7pm

\$ \$270

👤 18+



DR04

Portraiture for the Absolute Beginner

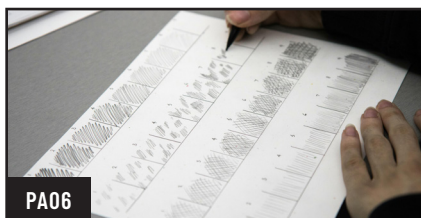
with Ashley Robles

📅 1/27-2/24

🕒 Tuesdays from 6pm-9pm

\$ \$225

👤 18+



PA06

Values of Love in Painting

with Jamie Monaghan

📅 2/1-2/8

🕒 Sundays from 5pm-8pm

\$ \$90

👤 18+



DR08

Botanical Drawing (2 parts)

with Joanna Conti

📅 4/11-4/18

🕒 Fridays from 12pm-2pm

\$ \$105

👤 18+



PA01

Mastering Color

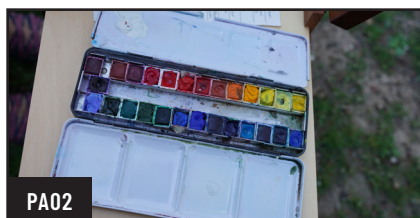
with Joanna Conti

📅 3/2-3/23

🕒 Mondays from 12pm-2pm

\$ \$180

👤 18+



PA02

Spring Watercolor Creations

with Joanna Conti

📅 4/21-5/5

🕒 Tuesdays from 6pm-8pm

\$ \$135

👤 18+



PA15

Winter Watercolor Creations

with Joanna Conti

📅 1/15-2/12

🕒 Thursdays from 6pm-8pm

\$ \$180

👤 18+



"Genevieve is such a great teacher."

It's so clear she loves what she does and is eager to help others find that same passion."

Austin

DA01 Procreate Portraiture





PA04

Painting with Texture

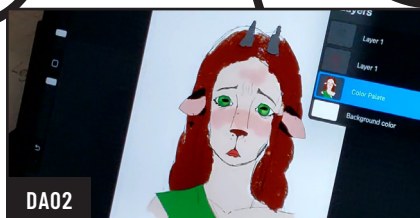
with Joanna Conti

📅 3/30-4/20

🕒 Mondays from 12pm-2pm

\$ \$180

👤 18+



DA02

Character Design with Procreate

with Bea Angeles

📅 3/19-3/26

🕒 Thursdays from 6pm-8pm

\$ \$90

👤 18+



PA13

Classical Oil Painting: Still Life

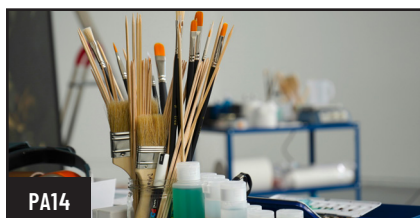
with Nathan Archinal

📅 3/3-4/7

🕒 Tuesdays from 1pm-4pm

\$ \$270

👤 18+



PA14

Portrait Work with Oil and Pastels

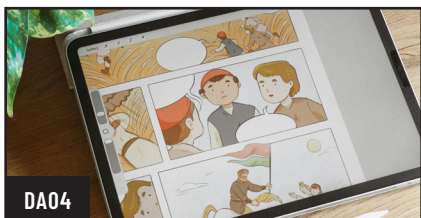
with Nathan Archinal

📅 3/3-4/7

🕒 Tuesdays from 5pm-8pm

\$ \$270

👤 18+



DA04

Graphic Novels & Comics with Procreate

with Bea Angeles

📅 4/14-5/5

🕒 Tuesdays from 6pm-8pm

\$ \$160

👤 18+



DA03

Intro to Procreate

with Bea Angeles

📅 2/5-3/5

🕒 Thursdays from 6pm-9pm

\$ \$200

👤 18+

MIXED Media

MORE
DATES
& TIMES

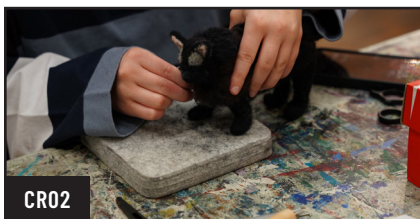


CR12

Moss Art and Mocktails

with Diana Kauffman

- 📅 2/20
- 🕒 Friday from 6pm-9pm
- 💰 \$75
- 👤 18+



CR02

Needle Felted Spring Robin with Nest

with Erin Carlson

- 📅 4/1-4/8
- 🕒 Wednesdays from 6pm-9pm
- 💰 \$140
- 👤 18+



DA01

Intro to Cinematography

with Michael Bagnato

- 📅 1/26-3/2
- 🕒 Mondays from 6pm-9pm
- 💰 \$200
- 👤 18+



CR01

Needle Felted Love Birds

with Erin Carlson

- 📅 2/11
- 🕒 Wednesday from 6pm-9pm
- 💰 \$70
- 👤 18+



CR10

Matboard Cutting for Your Art

with Joanna Conti

- 📅 3/6
- 🕒 Friday from 12pm-2pm
- 💰 \$50
- 👤 18+



PR05

Printmaking Exploration

with Joanna Conti

📅 3/12-4/16

🕒 Thursdays from 12pm-2pm

\$ \$270

👤 18+



CR11

Chunky Knit Blanket

with Lori Turner

📅 2/21

🕒 Saturday from 11am-2pm

\$ \$70

👤 18+

MORE
DATES
& TIMES



CR08

Chunky Knit Decor (Bunnies, Pumpkins, Snowmen)

with Lori Turner

📅 3/18

🕒 Wednesday from 6pm-8pm

\$ \$70

👤 18+

MORE
DATES
& TIMES



PH01

Intro to Digital Photography

with Michael Bagnato

📅 3/9-4/13

🕒 Mondays from 6pm-9pm

\$ \$240

👤 16+



**Scan for a full list of
ART EXHIBITIONS**





***Private* LESSONS**

Sweetwater offers private lessons for those seeking individualized learning in painting, ceramics, metalsmithing and more.

Lessons start at \$70/hour. Please email Elizabeth Sorensen at esorensen@sweetwaterartcenter.org.

Sweetwater

OPEN HOUSE

FREE · INTERACTIVE · COMMUNITY

December 7th

April 19th

August 29th

MADE *Possible* BY

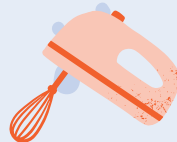


HOMESCHOOL FOOD SCIENCE

 AGES 8-12 

TUESDAYS • 10:00AM-1:00PM

JOIN US FOR FOOD FOCUSED CURRICULUM IN DAYTIME CLASSES
FOR HOMESCHOOL STUDENTS!



AFTERSCHOOL CULINARY CLUB



AGES 10-15



TUESDAYS • 3:30-5:30PM

JOIN US FOR FUN, HANDS-ON COOKING + BAKING THAT SPARKS
CREATIVITY AND BUILDS CONFIDENCE IN THE KITCHEN!



SCHOLARSHIPS GENEROUSLY SUPPORTED
BY THE UNION AID SOCIETY

Metalsmithing



MORE
DATES
& TIMES

MT01

Metalsmithing

with Pat Falbo

📅 1/26-3/23

🕒 Mondays from 10am-1pm

\$ \$380

👤 18+



MORE
DATES
& TIMES

MT11

Metalsmithing

with Pat Falbo

📅 3/30-5/18

🕒 Mondays from 1:30pm-4:30pm

\$ \$380

👤 18+



MT15

Intro to Metalsmithing

with Alyse Ambriel

📅 1/14-2/18

🕒 Wednesdays from 6pm-9pm

\$ \$285

👤 18+



MT16

Advanced Metalsmithing

with Sarah Sindler

📅 1/20-2/24

🕒 Tuesdays from 6pm-9pm

\$ \$300

👤 18+



MT03

Self-Guided Metalsmithing

with Alyse Ambriel

📅 2/25-4/8

🕒 Wednesdays from 6pm-9pm

\$ \$245

👤 18+



MT04

Intro to Enameling

with Sarah Sindler

📅 2/23-3/16

🕒 Mondays from 6pm-9pm

\$ \$200

👤 18+



MT05

Cloisonné Enameling

with Sarah Sindler

📅 3/31-5/5

🕒 Tuesdays from 6pm-9pm

\$ \$300

👤 18+



MT20

Charms of the Lost & Found

with Diana Kauffman

📅 5/11

🕒 Monday from 6pm-9pm

\$ \$95

👤 18+

SCAN FOR ALL
METALSMITHING
CLASSES



"Pat is a wonderful
instructor!"

Judy

MT02 Metalsmithing with Pat Falbo



CERAMICS



CS05

Adult Hand Building with Libby Scutt

📅 1/12-3/2

🕒 Mondays from 6pm-9pm

\$ \$270

👤 18+



CS01

MORE
DATES
& TIMES

Beginning Wheel Throwing with Alexandra Watrous

📅 1/13-3/3

🕒 Tuesdays from 10am-1pm

\$ \$340

👤 18+



CS02

MORE
DATES
& TIMES

Beginning Wheel Throwing with Brandi Hugar

📅 1/13-3/3

🕒 Tuesdays from 6pm-9pm

\$ \$340

👤 18+



CS03

MORE
DATES
& TIMES

Advanced Wheel Throwing with Alexandra Watrous

📅 1/14-3/4

🕒 Wednesdays from 6pm-9pm

\$ \$360

👤 18+



CS04

MORE
DATES
& TIMES

Advanced Wheel Throwing with Alexandra Watrous

📅 1/15-3/5

🕒 Thursdays from 10am-1pm

\$ \$360

👤 18+



CS07

Self-Guided Ceramics

- 📅 4/8-5/13
- 🕒 Wednesdays from 10am-1pm
- 💰 \$210
- 👤 18+



CS06

Basics of Electric Kiln Firing

with Alex Watrous

- 📅 4/19
- 🕒 Sunday from 10am-3pm
- 💰 \$50
- 👤 18+



CS12

Sculptural Coiling

with Libby Scutt

- 📅 4/6-5/11
- 🕒 Mondays from 6pm-9pm
- 💰 \$270
- 👤 18+

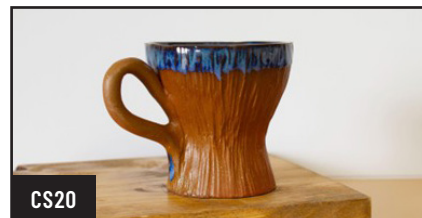


CS19

Portrait Sculpture

with Parker Donaldson

- 📅 4/12-5/10
- 🕒 Sundays from 5pm-8pm
- 💰 \$270
- 👤 18+



CS20

Espresso Mug Madness

with Libby Scutt

- 📅 3/9-3/30
- 🕒 Mondays from 6pm-9pm
- 💰 \$180
- 👤 18+

SCAN FOR ALL
CERAMICS
CLASSES





CS22

Art As Activism (Hand Building)

with Brandi Hugar

📅 4/17-5/1

🕒 Fridays from 6pm-9pm

💰 \$120

👤 18+



CS23

All About That Vase

with Brandi Hugar

📅 1/29-3/26

🕒 Thursdays from 6pm-9pm

💰 \$225

👤 18+



CS24

Throwing Teapots

with Alex Watrous

📅 4/23-5/14

🕒 Thursdays from 6pm-9pm

💰 \$180

👤 18+



CS30

Mosaic China Creations

with Melissa Rhines

📅 4/11-5/9

🕒 Saturdays from 2pm-4pm

💰 \$225

👤 18+



CS25

Surface Stories: A 3-Week Ceramic Workshop

with Alex Watrous

📅 5/6-5/20

🕒 Wednesdays from 6pm-9pm

💰 \$135

👤 18+



CERAMIC ARTIST IN RESIDENCE

FALL 2026

This 3-month program is designed for self-motivated, local and regional, artists seeking to advance their artistic career, craft, or a specific project within the community arts studio setting.

SESSION DATES: Sept. 14 – December 11

Applications open: May 1, 2026

Deadline to Apply: July 17, 2026



Scan for a full list of artist
benefits and responsibilities



Questions? Contact:

Liana Agnew

Director of Artistic Advancement

lagnew@sweetwaterartcenter.org

412-741-4405 ext. 103

CULINARY Arts



CU61

Asian Dumplings

with Eric White

📅 2/10

🕒 Tuesday from 6:30pm-9pm

\$ \$85

👤 18+



CU16

The Korean Superfood, Kimchi Making

with Jinn Kim

📅 3/1

🕒 Sunday from 11am-3pm

\$ \$75

👤 18+



CU51

Korean BBQ Party

with Jinn Kim

📅 3/28

🕒 Saturday from 5pm-9pm

\$ \$100

👤 18+



CU02

Date Night

with Laurie Trok

📅 2/27

🕒 Friday from 6pm-9pm

\$ \$195

👤 18+

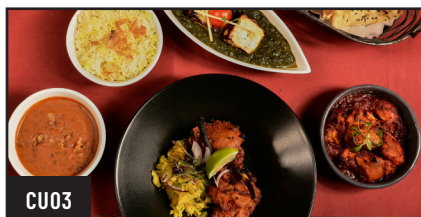


Culinary Assistant PROGRAM

This program is an opportunity to grow your culinary experience while earning class credits to use at Sweetwater. If you are a Culinary Assistant, you earn \$10 Sweetwater credits per hour and can utilize your Sweetwater credits for classes!

Contact Saige Baxter for questions and applications.

✉ sbaxter@sweetwaterartcenter.org



CU03

Chaat and Chutney

with Laurie Trok

📅 2/12

🕒 Thursday from 6pm-9pm

\$ \$95

👤 18+



CU04

Chili Challenge

with Laurie Trok

📅 2/15

🕒 Sunday from 11am-2pm

\$ \$85

👤 18+



CU05

**DROP IN
AVAILABLE
@ \$75**

French Pastry

with Laurie Trok

📅 3/4-4/8

🕒 Wednesdays from 10am-2pm

\$ \$450

👤 18+



CU11

Southern Indian Cuisine

with Laurie Trok

📅 3/5

🕒 Thursday from 6pm-9pm

\$ \$95

👤 18+



CU12

Cake Baking and Decorating

with Laurie Trok

📅 3/12-4/2

🕒 Thursdays from 11am-2pm

\$ \$300

👤 18+



CU13

Sicilian Street Food

with Laurie Trok

📅 3/21

🕒 Saturday from 6pm-9pm

\$ \$95

👤 18+



CU14

North Indian Cuisine

with Laurie Trok

📅 4/10

🕒 Friday from 6pm-9pm

\$ \$95

👤 18+



CU29

Tour de Pizza

with Laurie Trok

📅 4/23

🕒 Thursday from 6pm-9pm

\$ \$85

👤 18+

SCAN FOR ALL
CULINARY
CLASSES



CU53

Plan Your Culinary Garden

with Laurie Trok

📅 4/22-4/29

🕒 Wednesdays from 11am-1pm

\$ \$60

👤 18+



CU62

Pierogi Night

with Laurie Trok

📅 3/12

🕒 Thursday from 6pm-9pm

💰 \$85

👤 18+



CU64

Sushi Making

with Laurie Trok

📅 5/8

🕒 Friday from 6pm-9pm

💰 \$100

👤 18+



CU01

Taste of Syria: A Culinary Journey

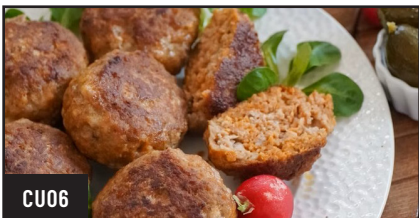
with Michelle George

📅 1/30

🕒 Friday from 6pm-9pm

💰 \$95

👤 18+



CU06

Meatballs!

with Michelle George

📅 2/20

🕒 Friday from 6pm-9pm

💰 \$85

👤 18+



CU30

Date Night: Flavors of Jerusalem

with Michelle George

📅 4/11

🕒 Saturday from 6pm-9pm

💰 \$195

👤 18+



CU24

High Noon Tea

with Michelle George

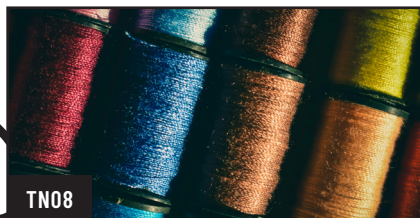
📅 5/9

🕒 Saturday from 11am-2pm

💰 \$75

👤 18+

TEEN Classes



TN08

Punch Needle Art

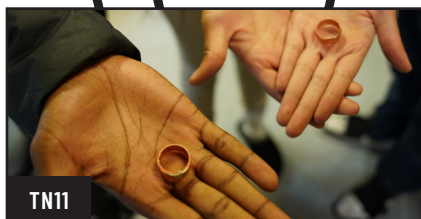
with Bea Angeles

📅 4/23-5/7

🕒 Thursdays from 6pm-8pm

\$ \$105

👤 11-15 yrs



TN11

Intro to Metalsmithing for Teens

with Brandy Donze

📅 4/2-4/23

🕒 Thursdays from 6pm-8pm

\$ \$180

👤 11-15 yrs



TN06

Copycat Cooking: Sweets!

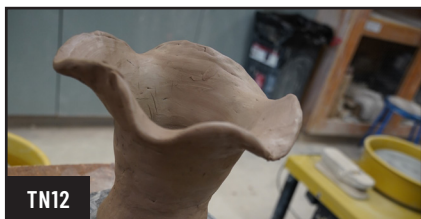
with Michelle George

📅 3/28

🕒 Saturday from 11am-2pm

\$ \$75

👤 11-15 yrs



TN12

Wheel Throwing for Teens

with Brandi Hugar

📅 2/22-3/29

🕒 Sundays from 3pm-5pm

\$ \$255

👤 12-16 yrs



TN02

Character Design with Procreate

with Bea Angeles

📅 4/2-4/9

🕒 Thursdays from 5pm-7pm

\$ \$80

👤 11-15 yrs



TN01

Intro to Needle Felting for Teens

with Bea Angeles

📅 3/24-4/7

🕒 Tuesdays from 6pm-8pm

💰 \$105

👤 11-14 yrs



TN04

Graphic Novels & Comics with Procreate

with Bea Angeles

📅 2/24-3/17

🕒 Tuesdays from 6pm-8pm

💰 \$140

👤 14-17 yrs



TN03

Create Your Own Characters: Polymer Clay Figurines

with Bea Angeles

📅 2/27-3/27

🕒 Fridays from 6pm-8pm

💰 \$175

👤 11-15 yrs



TN16

Fundamentals of Painting for Teens

with Jamie Monaghan

📅 4/18-5/9

🕒 Saturdays from 5:30pm-7:30pm

💰 \$160

👤 11-16 yrs



TN07

Project Yarn: Mushroom Satchel

with Brandy Donze

📅 4/30-5/2

🕒 Thursdays from 6pm-7:30pm

💰 \$70

👤 11-16 yrs

SCAN FOR ALL
TEEN CLASSES



CHILDREN'S Classes

SCAN FOR ALL
CHILDREN'S
CLASSES



CH30

After School Culinary Club: Winter/Spring Semester

with Laurie Trok

📅 2/3-5/19

🕒 Tuesdays from 3:30pm-5:30pm

\$ \$640

👤 10-15 yrs



CH31

After School Culinary Club: February

with Laurie Trok

📅 2/3-2/24

🕒 Tuesdays from 3:30pm-5:30pm

\$ \$160

👤 10-15 yrs



CH32

After School Culinary Club: March

with Laurie Trok

📅 3/3-3/31

🕒 Tuesdays from 3:30pm-5:30pm

\$ \$200

👤 10-15 yrs



CH33

After School Culinary Club: April

with Laurie Trok

📅 4/7-4/28

🕒 Tuesdays from 3:30pm-5:30pm

\$ \$160

👤 10-15 yrs



CH34

After School Culinary Club: May

with Laurie Trok

📅 5/5-5/19

🕒 Tuesdays from 3:30pm-5:30pm

\$ \$120

👤 10-15 yrs



CH35

Kids Cake Making

with Laurie Trok

📅 3/22

🕒 Sunday from 3:30pm-5:30pm

\$ \$75

👤 7-10 yrs



CH20

Pasta Making for Children

with Laurie Trok

📅 4/12

🕒 Sunday from 3:30pm-5:30pm

\$ \$75

👤 7-10 yrs



CH14

Pizza for Kids!

with Laurie Trok

📅 2/22

🕒 Sunday from 3:30pm-5:30pm

\$ \$75

👤 7-10 yrs



CH22

Fairy Houses

with Brandi Hugar

📅 3/13-3/27

🕒 Fridays from 6pm-9pm

\$ \$120

👤 7-11 yrs



CH54

Food Science Homeschool Programming

with Laurie Trok

📅 2/24

🕒 Tuesday from 10am-1pm

\$ \$60

👤 8-12 yrs



CH01

Wheel Throwing for Children

with Brandi Hugar

- 📅 2/22-3/29
- 🕒 Sundays from 12pm-2pm
- 💰 \$255
- 👤 7-11 yrs



CH05

Scribble Squad: Drawing Club

with Brandy Donze

- 📅 3/10
- 🕒 Tuesdays from 3:30pm-5:30pm
- 💰 \$45
- 👤 8-12 yrs



CH06

April In Paris

with Colleen Shert

- 📅 4/17
- 🕒 Fridays from 6pm-8pm
- 💰 \$50
- 👤 7-10 yrs



CH07

Art From The Heart

with Colleen Shert

- 📅 2/14
- 🕒 Saturdays from 10am-12pm
- 💰 \$50
- 👤 7-10 yrs



Sweetwater SCHOLARSHIPS



Scholarships are available for adults and children demonstrating financial need. Scholarships are sponsored by the Allegheny Regional Asset District (RAD) and the generous support of individuals.

To apply, call us at 412-741-4405 or visit SweetwaterArtCenter.org/scholarshipinformation/



CH12

Paper Puppetry Party!

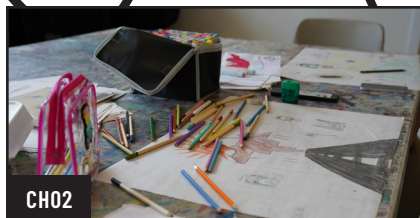
with Darya Kharabi

📅 4/27-5/18

🕒 Mondays from 5pm-8pm

\$ \$140

👤 7-10 yrs



CH02

Beginner Drawings Skills for Kids

with Jamie Monaghan

📅 1/13-2/17

🕒 Tuesdays from 5:30pm-7:30pm

\$ \$210

👤 7-11 yrs



CH10

Eco Art Studio Time

with Melissa Rhines

📅 2/7

🕒 Saturday from 11am-1pm

\$ \$50

👤 7-10 yrs



CH08

Bow Wow Meow

with Colleen Shert

📅 3/20

🕒 Friday from 6pm-9pm

\$ \$50

👤 7-10 yrs



"So thoughtful and above and beyond..."

My child left each session commenting on how "Amazing" and "Wonderful" her day was. We had to miss Friday and Laurie tried hard to let my daughter finish her Friday project early so we didn't miss out- so thoughtful and above and beyond of her. "

Cassandra

CHS10 Cake Decorating



EARLY Childhood



^
**SCAN FOR ALL
EARLY CHILDHOOD
CLASSES**



**MORE
DATES
& TIMES**

EC05

Cooking Together

with Laurie Trok

📅 2/22

🕒 Sunday from 11am-2pm

\$ \$85

👤 2-5 yrs w/ accompanying adult



**MORE
DATES
& TIMES**

EC10

Cooking Together: Cake

with Laurie Trok

📅 3/22

🕒 Sunday from 11am-2pm

\$ \$85

👤 2-5 yrs w/ accompanying adult



**MORE
DATES
& TIMES**

EC01

Eco Art Playtime

with Melissa Rhines

📅 3/7

🕒 Saturday from 11am-1pm

\$ \$50

👤 4-6 yrs



EC03

Snowman Creation

with Sally Oberdick

📅 1/24

🕒 Saturday from 10am-12pm

\$ \$50

👤 4-6 yrs



EC04

Winter Animals

with Sally Oberdick

📅 2/7

🕒 Saturday from 10am-12pm

\$ \$50

👤 4-6 yrs



EC06

Shamrocks Galore

with Sally Oberdick

📅 3/14

🕒 Saturday from 10am-12pm

\$ \$50

👤 4-6 yrs



EC07

The Tiny Seed

with Sally Oberdick

📅 4/18

🕒 Saturday from 10am-12pm

\$ \$50

👤 4-6 yrs



EC08

Fairy Gardens

with Sally Oberdick

📅 5/2

🕒 Saturday from 10am-12pm

\$ \$50

👤 4-6 yrs



"Laurie was great with the kids - they were engaged and had so much fun!"

Lara

EC05 Cooking Together



THE PERFECT VENUE FOR WORK AND PLAY



Studio Rentals

Individuals may rent Sweetwater's Ceramic and Metalsmithing studios when the schedule permits. Please call for studio availability.

MEMBERS: \$15/HOUR

NON-MEMBERS: \$20/HOUR

Building Rentals

Staged in the Old Sewickley Post Office built in 1910, Sweetwater creates the perfect venue for all of your parties and events! Rentals provide access to Sweetwater's Community Room, Kitchen, and Lobby. We welcome parties, anniversaries, showers, weddings, and more!

& you come first!

At S&T Bank, we serve our community. We're on a first name basis. We invest in and give back to our neighbors. **And we take every opportunity to go above and beyond for our customers and communities.**

Our shared future begins with you.

S&T Bank

800.325.2265 • stbank.com

MEMBER FDIC



SWEETWATER *Birthday Parties*

Birthday Parties at Sweetwater are available any day of the week. We require reservations to be made at least three weeks before your event date; however, we do recommend that you book your party at least two months in advance to ensure availability. Requests are subject to classroom and instructor schedules. Choose the package that best fits your needs for a fantastic birthday celebration!

Our Perfect Party Packages



DIY PARTY PACKAGE

Member Fee: \$300

Non-Member Fee: \$350



DELUXE PARTY PACKAGE

Member Fee: \$400

Non-Member Fee: \$450



CERAMIC PARTY PACKAGE

Member Fee: \$450

Non-Member Fee: \$500



CULINARY PARTY PACKAGE

Member Fee: \$450

Non-Member Fee: \$500



LEARN MORE

For more information, or to customize your party please contact Elizabeth Sorensen at esorensen@sweetwaterartcenter.org or, visit SweetwaterArtCenter.org/birthday-parties.



2026 MASTER CLASSES

Sweetwater's Master Class series are led by highly skilled, nationally renowned artists in varying fields.

These intensive workshops allow students to ask questions, engage in discussion, and receive personalized feedback and attention from the artists.



REGISTER FOR MASTER CLASSES

If you have any questions regarding registration, please call 412-741-4405 or email lagnew@sweetwaterartcenter.org



CRISTINA CORDOVA

www.cristinacordova.com

Figurative Ceramics

Saturday, April 25
& Sunday, April 26, 2026



RON DONOUGHE

www.donoughe.com

Seeing as an Artist

Saturday, June 27
& Sunday, June 28, 2026





2026 SCHEDULE OF EVENTS

SWEETWATER BLOOMS

Saturdays from 9am-1pm

May 16 • June 20 • July 18 • August 15 • September 19

SWEET JAZZ

Fridays from 6pm-9pm

June 5 • Outdoors at Walnut Green

June 12 • Indoors at Sweetwater

July 10 • Outdoors at Walnut Green

July 17 • Indoors at Sweetwater



FOLK FEBRUARY

Fridays from 6:30pm-9:30pm

February 6 • February 26

MAVUNO

Exhibition Reception • Friday, September 25th, from 6pm-8pm

Mavuno Festival • Saturday, September 26th, from 10am-4pm



SCAN
FOR
INFO



Winter / Spring 2026 EXHIBITIONS

SWEETWATER MEZZANINE GALLERY

THE PITTSBURGH GROUP

February 5 – March 27

Opening reception: Thursday, February 5th, 6-8 p.m.

The Pittsburgh Group are fourteen women artists who live in southwestern Pennsylvania and exhibit as a group biennially. As individuals, we show locally, nationally, and internationally.

CRAFTED IN THE VALLEY, CONTEMPORARY VOICES IN APPALACHIA

April 9 – May 22

Opening reception: Thursday, April 9th, 6-8 p.m.

Artists across media reflecting on the culture, landscapes, and lived experiences of Appalachia. Call for entry!

THE OLIVER FAMILY LOBBY & GALLERY

Located in our historic lobby entrance, the Oliver Family Lobby & Gallery highlights individual artists throughout the year.

STACEY BIRO

February 5 – April 2

Opening reception: Thursday, February 5th, 6-8 p.m.



Sweet Ride



SweetRide is Sweetwater's Mobile Art Unit - creatively bridging Sweetwater to our community partners by ensuring accessible art experiences and providing a mobile marketplace for local artists to sell their work.

CONTACT SAIGE BAXTER FOR QUESTIONS
SBAXTER@SWEETWATERARTCENTER.ORG



THE CAHOUE
FAMILY
FOUNDATION



SWEETRIDE IS AVAILABLE FOR COMMUNITY WORKSHOPS AND EVENTS!



ART PARTY PACKAGE

1.5 hour workshop with SweetRide and a Sweetwater Instructor in 2D art. Themes and materials can be requested.

Headcount: 12 (Can request additional headcount for \$25 per person)

CHILD PARTY \$420
ADULT PARTY \$480



CERAMIC PARTY PACKAGE

1.5 hour workshop with SweetRide and a Sweetwater Instructor in clay hand building. Themes can be requested.

Headcount: 12 (Can request additional headcount for \$25 per person)

CHILD PARTY \$480
ADULT PARTY \$550



COMMUNITY WORKSHOPS

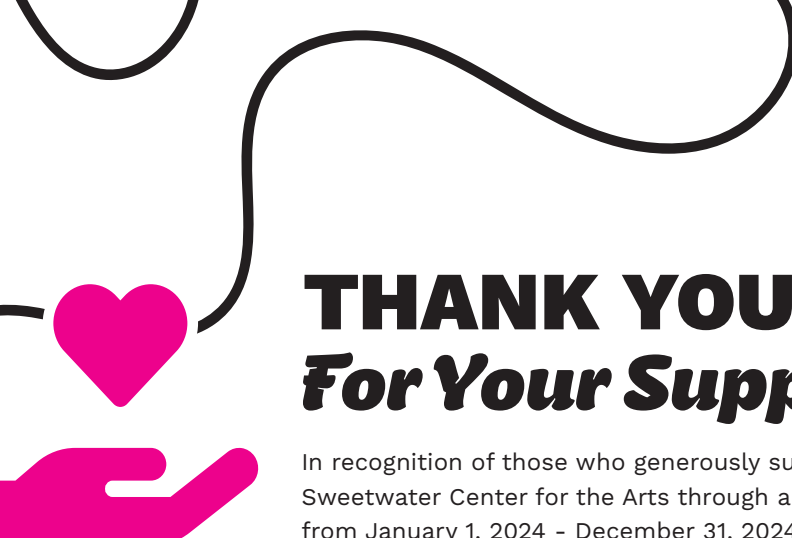
Enjoy a hands-on art workshop for 2 hours with SweetRide and a Sweetwater Instructor.

Nonprofit and Community Partner rates:

CLAY starting at \$290
2D starting at \$260

**Learn more
here!**





THANK YOU *For Your Support*

In recognition of those who generously supported Sweetwater Center for the Arts through annual giving from January 1, 2024 - December 31, 2024.

***Names in bold indicate new or increased giving.**



PLATINUM **\$5000+**

Ada and George Davidson
Shari and Randy Dearth
Trudy and Art Hetherington
Scott Schober
Carol and Gary Schurman
Maggie and Chuck Setler
Terri and Steve Tunick

PLATINUM **\$4,999-2,500**

Margot Cheel
In Honor of Trudy Hetherington
Beth and Elliot Davis
Misha and Jim Garrison
James H. Oliver
In Honor of Trudy Hetherington
Marta and Mark Izydore
Eileen and Thomas McConomy
Jamie and Pam Rogers
Barbara Cooley Thaw and Robert Thaw
Gene Welsh and Marty Healey



GOLD

\$2,499-1,000

Libby Andrews

Stacey and Duncan Nielson

Marcie and Bill Coates

Blair and Christopher Chan

Elizabeth Evans and Robert Ferguson

Marcia and David Gordon

Holly Hampe and Michael Hatcher

Lisa and Michael Hart

Susan and Peter Herchenroether

Robert Hetherington

In Honor of Trudy Hetherington

Ellen Leyva and Stephen Gaustad

Joan Miles and Clifford Bob

Debra and Sam Patti

William Recker

Nancy and Doug Sansom

Anne Flynn Schlicht and Peter Schlicht

Tracey and Mike Staley

Maria and Dr. Joel Swanson

SILVER

\$999-500

Diana Lalich and Ahmed Aziz

Drs. Leslie and Michael Braksick

Robin Bolea and Stephen Hunter

Margaret Gilfillan

Denise Ditrich and William Griesacker

Carolyn and Paul Hrach

Diana and Brad Kauffman

Marilyn and Terry Newton

Michael Nobers

Jennifer and David Young

BRONZE

\$499-250

Sarah Aziz and Ryan Prem

Suzanne and Gary Bates

Gail and David Becker

Christine Brondyke

Andrew Coburn

In Memory of Ann and Tui Coburn

Hanley Bird Cox

Carol and James Crawford

Kathleen Flannery

Patricia and Eric Fulmer

Lisa Gordon and Martin O'Brien

Drs. Karen and Byron Galbraith

Steven Grair

Rachel and David Grometer

Sue Henry and Wayne Murphy

Helen and Ned Hetherington

In Honor of Trudy Hetherington

Peter Jones

Suzanne and Chad Kanick

Tiana Jordan and Kacey Kramer

Alice Lieb

Terry Manastyrski

Corrie Manjoo and Jas Sandhu

Ann and Don Morine

Cynthia and Michael Mullins

Elizabeth and Michael Murphy

Megan and Perry Myers

Jennifer and Dr. Byron Nastasi

Janice Maria Patz

Bill Pearson

In Memory of Pat Pearson

Dorothy and Neal Pollon

Joanita Sander and Nicholas Ruotolo

Judy and Harton Semple

Drs. Fiona and Bryan Suydam

Judith and Samuel Spanos

Jacqueline and Robert Weinberg

Kurt Wolf

In Memory of Bob Wolf

ESTEEMED DONORS

\$249-100

Alan Babcock

Kathleen Barge

In Honor of Tres and Darla Whitlock

Lucille and Jerry Bittner

Donald Booth

Kathryn and Michael Bryson

Gretchen and Robert Burnham

Lauren Key Burn and Alex Burns

Janet and Gary Chace

Elizabeth and Joseph Christof

Drs. Judy and Ira Cohen

Drs. Susan and John Comerici

Erin Cosgrove and John Harte

Brenda and Trevor Crowley

Thomas DeFazio

Nanette Douglas

Pat Falbo

Carroll Ferguson

Elizabeth Genter

Christianne and Andrew Gribben

Hadley and Scott Haas

Katherine and William Harbison

Janet Harner

Nell and Thomas Hartley

Marsha Helmer

In Memory of Robert Wolf

Haldane and Linda Hilbish

Trish Hooper

Drs. Nancy and Ken House

Judith and Barry Huff

Gwynne and Judy Jones

Susan and Greg Kaminski

Martina and Robert Kopf

Nathalie and Mario Lemieux

Jennifer and Adam Ligas

Donna and Joseph Marrone

Laura and David Mastrorocco

Doty and Glenn Mauney

Katherine and Joseph Meier

Deborah Millar

Celine and Paul O'Neill

John K. Orndorff

Mary Beth Pastorius & Connor Cogswell

Judith and Dr. Gregory Patrick

Robert Patterson

Cecelia and John Poister

Heather and Aaron Ponzo

Virginia and Bud Roemhild

In Honor of Alice Snyder

Hal Rubinstein

In Memory of Robert Wolf

Dr. Kristin Hannibal & Dr. Richard Saladino

George Shannon

Judith and Edward Sherry

Larry Silverman

Peggy Standish

Mary Beth and John Straka

Patricia and Victor Thomas

Carol and Richard Thompson

Dr. Barbara and Luke Ward

In Honor of Alice Snyder

\$99 AND BELOW

Marina Balko

Lisa and Charles Burrows

Bonnie and Ron Casper

Felice Cutruzzula

Christopher Driscoll

Leo Goode

Anne Marie Gordon

Mary Lea and Robert Gray

Judy and John Hagan

Jennifer Helmer

In Honor of Robert Wolf

Patty and Jeffrey Kendall

Mary and Craig Kirsch

Pamela and Dr. David Lasorda

Reverend Hannah Loughman

Nancy and Timothy Merrill

In Memory of Smokey Jack

Frances Merryman

William Obenour II

Susan Buerklin and Lou Romagnoli

Kathleen Driscoll Rumin

Judith and Mark Scioscia

50TH ANNIVERSARY ENDOWMENT

Bonnie and Ron Casper
Lisa and Mike Hart
Trudy Hetherington
Joan Miles and Clifford Bob
Christina Mullins
Sarah Mullins
Penn Mullins
James H. Oliver
Proteus Foundation
Margaret Zimmerman

50TH ANNIVERSARY CAPITAL CAMPAIGN

Bobbi Bonnett
Shari and Randy Dearth
Sue Henry and Wayne Murphy
Trudy Hetherington
Barry Huff
Peter Jones
Joan Miles and Clifford Bob
Eliza and Hugh Nevin
Patricia Rose
Maggie and Chuck Setler
Peggy Standish
Barbara Cooley Thaw and Robert Thaw
W.P. Snyder III Charitable Fund

SPONSORSHIP PARTNERS

AE Works
Eaton Corporation
Energy Products Company
Safran Supermarket
Sewickley Eye Group
Steel City Pediatric Dentistry
Walnut Street Wealth Advisors and
Physicians Financial-Northwestern Mutual
The Wilson Group
Donna and Kevin Flannery
Terri and Steve Tunick

INSTITUTIONAL & FOUNDATION SUPPORT

M.J. Miller Family Agricultural Heritage Fund
Mary E. Cole Fund
Proteus Foundation
R.P. Simmons Fund
Sewickley Civic Garden Council
Sewickley Valley Community Fund
Sewickley Valley Historical Society
The Cahouet Family Foundation
The Charity Randall Foundation
The Clapp Charitable and Educational Trust
The Grable Foundation
Thomas Marshall Foundation
Union Aid Society



SCAN
FOR INFO

Sweetwater Center for the Arts
200 Broad Street
Sewickley, PA 15143

Sweetwater 50th Anniversary Campaign

Scan the QR code to view campaign details
and take a virtual tour of the redesigned
Community Room



Contact Christine Brondyke to donate

Email: cbondyke@sweetwaterartcenter.org

Call or text: 412-877-3098

